

Congratulations on purchasing your MP3 Player! To get the most out of your purchase, please take the time to carefully read through this manual.

Foreword

If any problems occur during while using your player, please feel free to contact Mach Speed technical support at 580-272-0035. Thank you for your support and cooperation!

Mach Speed Technologies bears no responsibility for any damage or loss of personal data due to misuse of software and/or hardware, damage to the player caused by human factors, replacement of battery, or other unforeseen circumstances. To prevent the loss of your data, please backup your data regularly.

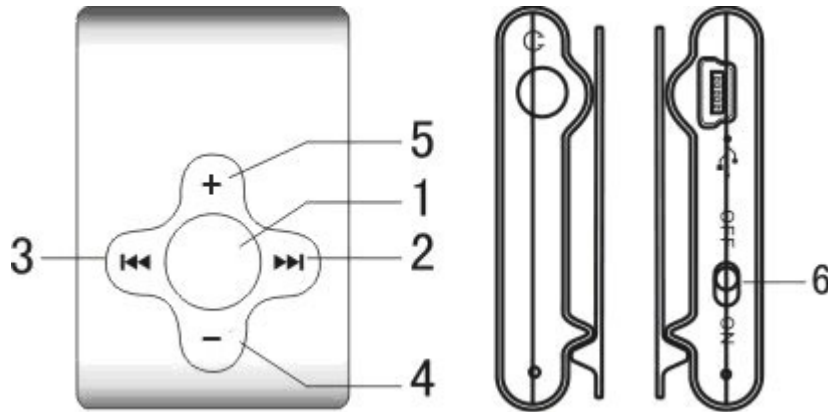
Information in the manual is subject to any change without notice and is subject to copyright protection. Copying or otherwise reproducing this material without prior written consent is prohibited.

Due to Firmware changes, some of the pictures and functions described in this manual may not be the same as are included with your player.

Precautions

- Avoid using your player under extremely hot, cold, dusty or wet environments.
- Striking, dropping, or severe jolts to your player may cause physical damage, battery loosening, or other hardware damage.
- Static electricity may cause damage to interior hardware of the player.
- Do not disconnect the player while formatting, uploading, or downloading files to the player, as it may cause program errors, or cause the unit to be unable to power on.
- When the player is used as a removable hard disk, users should store files following correct file management methods. We are not liable for any data loss or damage.
- Do not disassemble the unit in any way as this will void all warranties. Please contact your place of purchase if you experience any problems with your unit.
- The player may warm slightly when charging. This is normal.

Description



1. PLAY Button
2. NEXT button
3. BACK button
4. VOL- button
5. VOL+ button
6. Power switch

To power the player on, set the power switch to the ON position, then press and hold the PLAY button for 5 seconds. To power the player off, Press and hold the PLAY button for 5 seconds, then set the power switch to the OFF position. When powered on, but not playing, the LED will glow steadily. To play music, simply press the PLAY button briefly. The LED will begin to flash and your song will begin to play. To pause the song, briefly press the PLAY button again. The LED will become a steady glow. To skip to the next track, briefly press the NEXT button. To skip to the previous track, briefly press the BACK button. You can also fast forward or rewind by pressing and holding one of those 2 buttons. Increase volume by pressing the VOL+ button, or decrease volume by pressing the VOL- button. If the player is paused for more than 30 seconds, the player will power off to conserve battery life.

COMPUTER COMMUNICATION

Using Windows Media Player

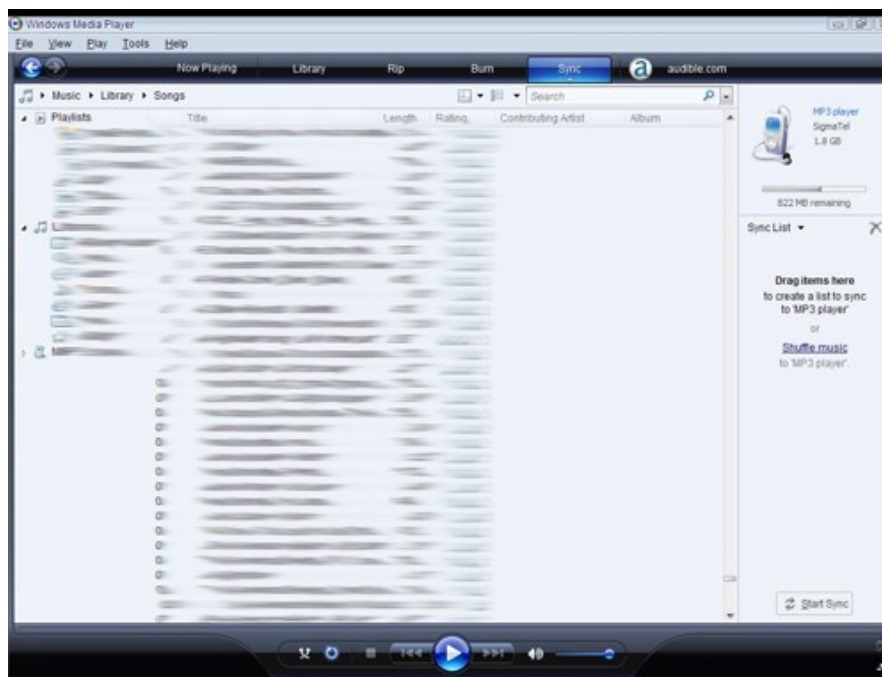
(Note: you must use Windows Media Player 10 or later to use this feature.)

(Note: this player does not support DRM encrypted audio files, such as those downloaded from the Windows Media Player download service.)

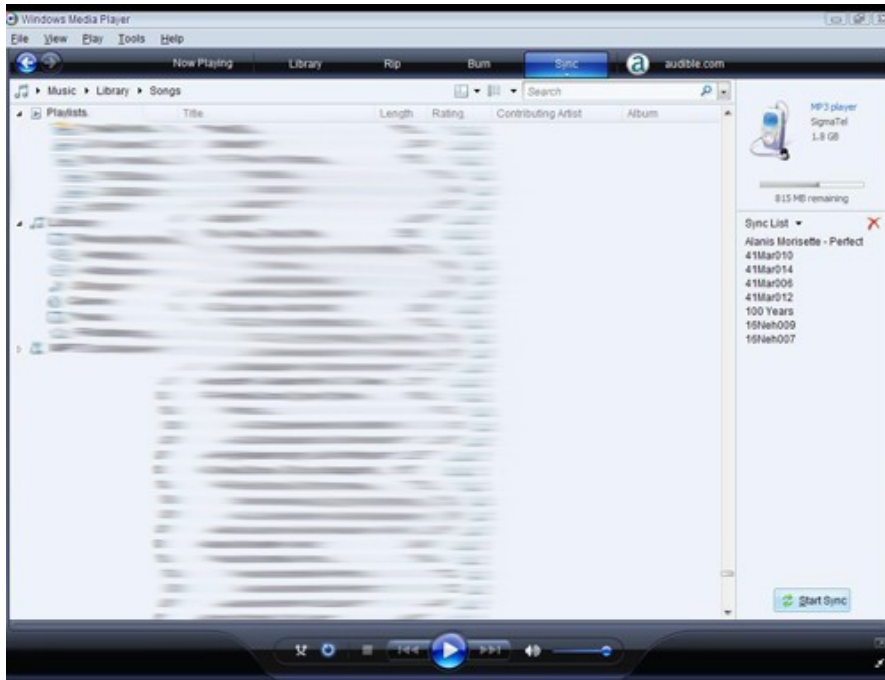
1. Open Windows Media Player and connect the MP3 player to a working USB port. Windows Media player will prompt you with a setup screen asking you to name the MP3 player.



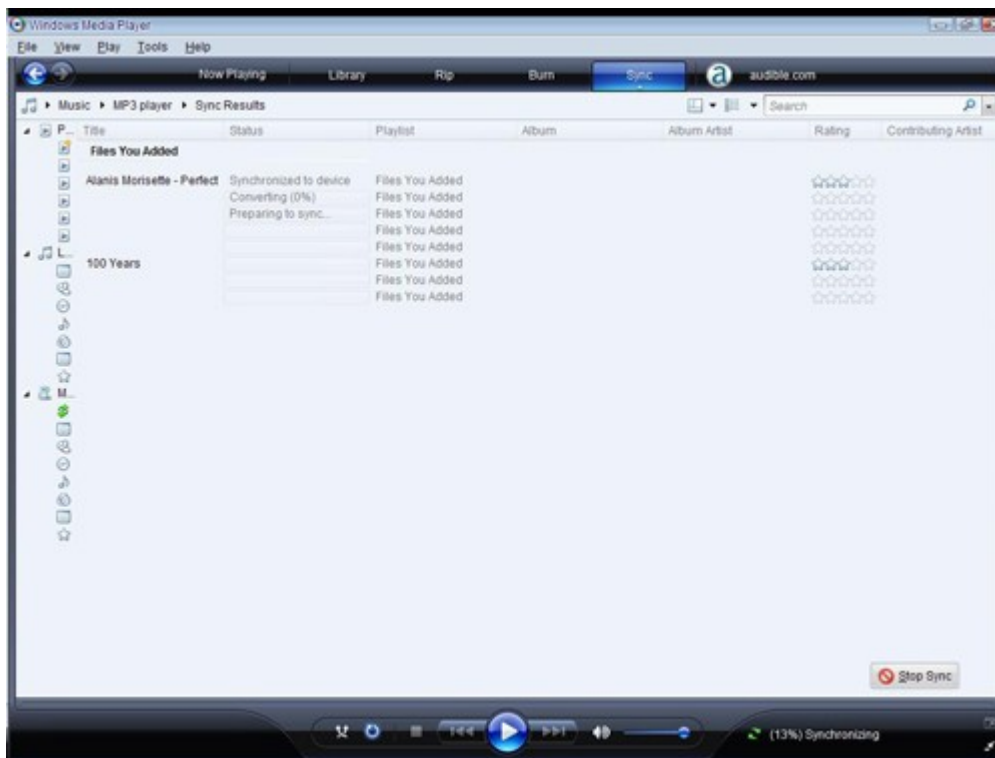
2. Once you have named your MP3 player, select Finish, and your Windows Media Player will open to the Sync tab.



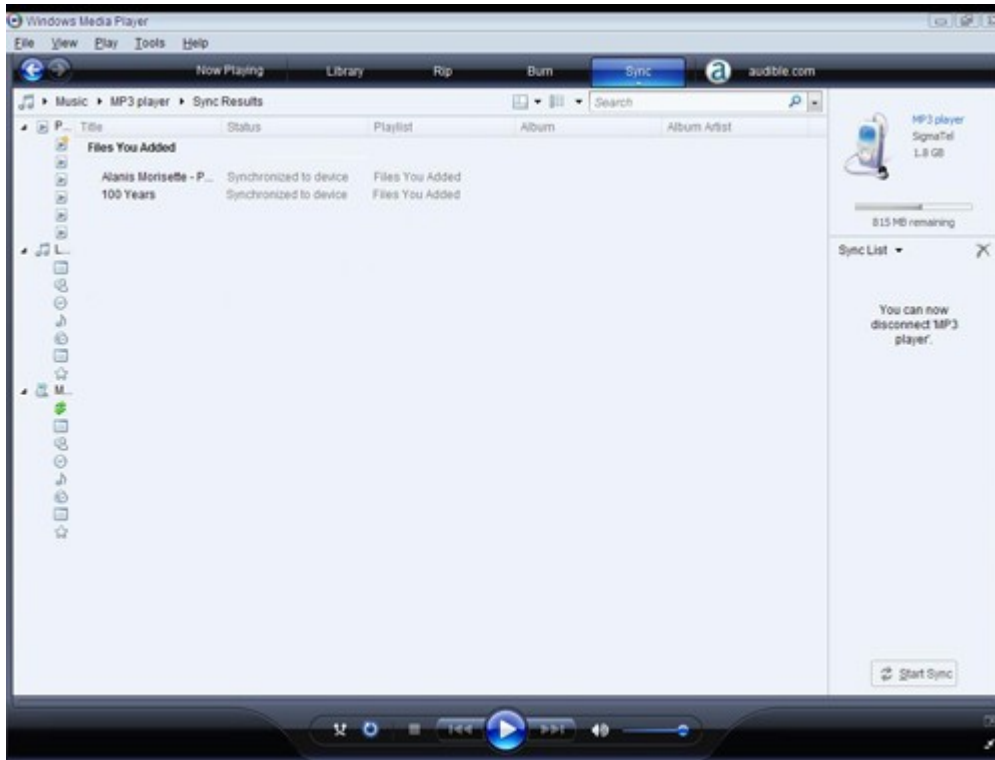
3. Drag your music to the sync list (on the right of the screen) from the list on the left. Once you have selected the music you wish to add to the player, press Sync.



3. Windows Media player will load the songs on to your MP3 player.

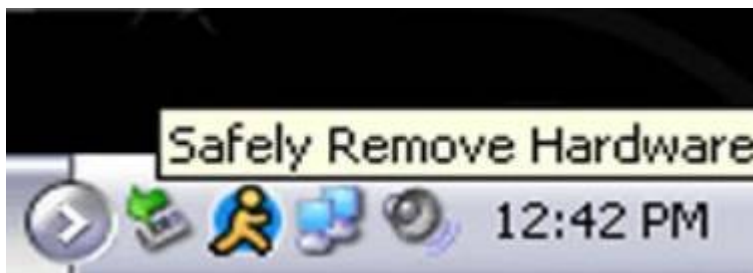


4. Once all the songs you have added are synced to the unit, and Windows Media Player says that is safe to disconnect your MP3 player, disconnect the device.

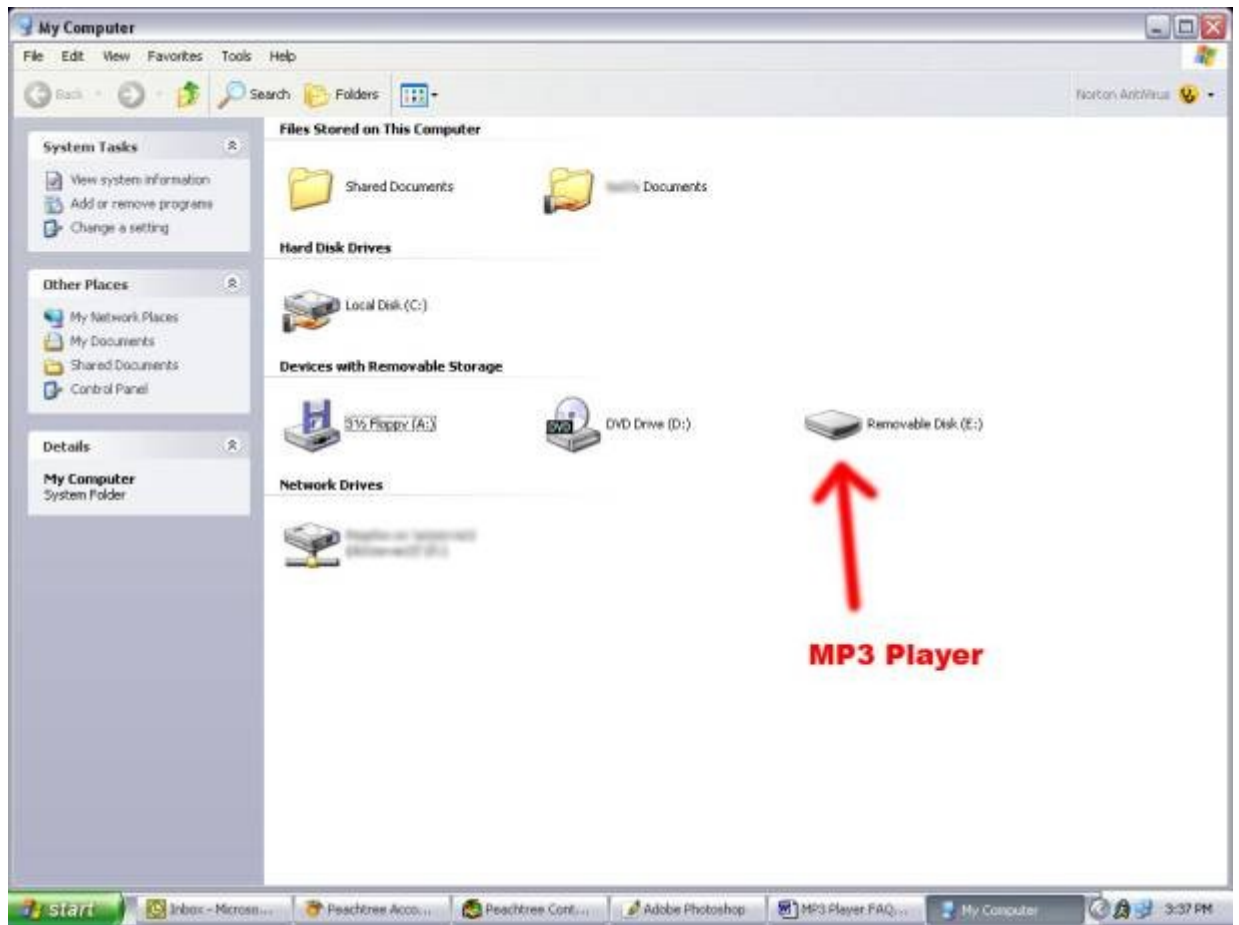


COPY AND PASTE

1. Connect the MP3 player to a working USB port.
2. When the unit is connected to your computer, it will create a gray and green icon in the system tray (lower right hand corner of your desktop). The icon will be called safely remove hardware.



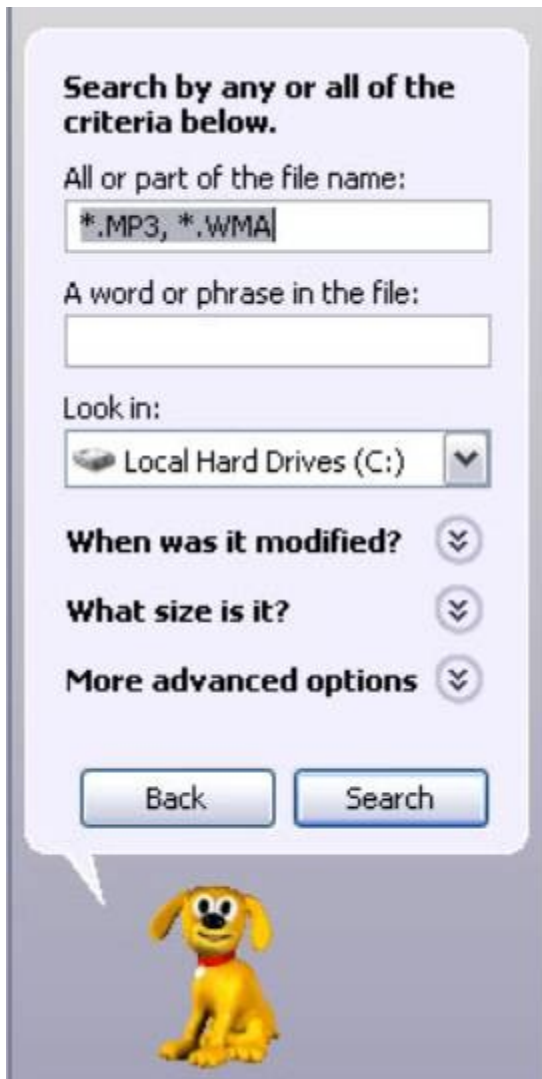
3. Go to the "My Computer" section of your computer. In there you will find a section called "devices with removable storage"



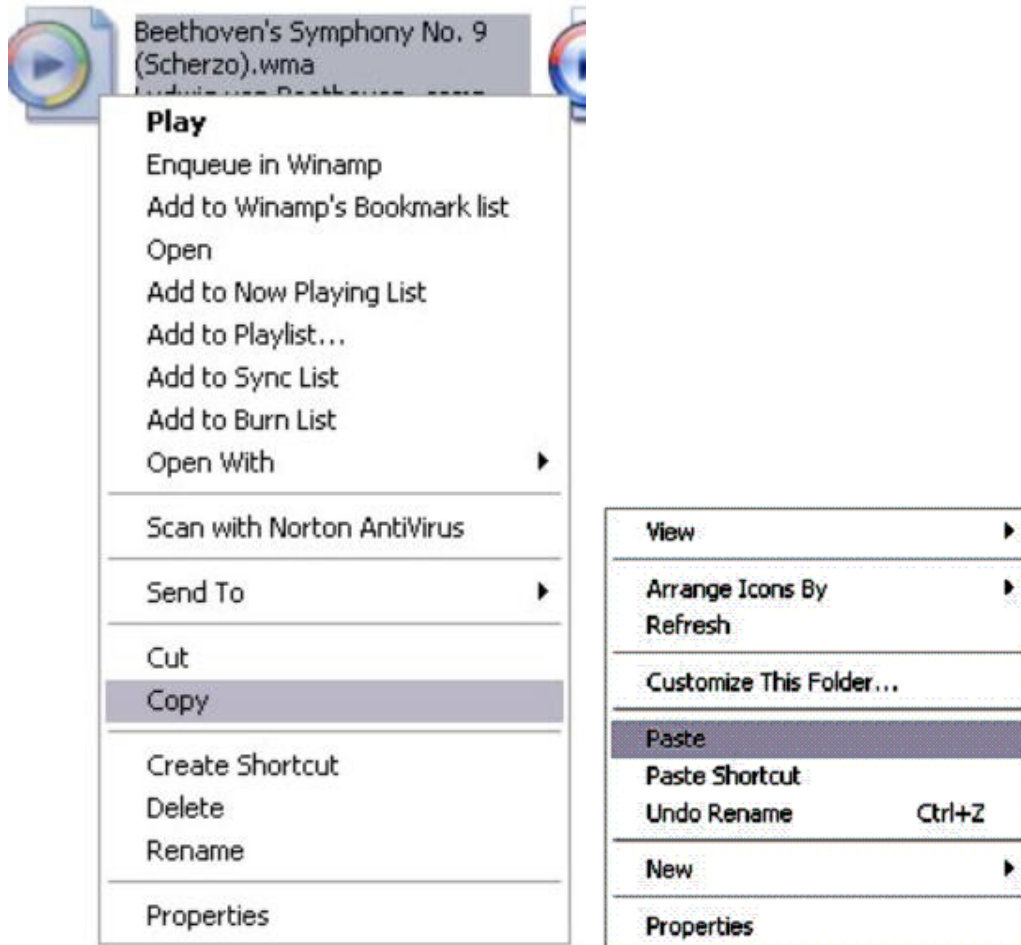
4. Locate the drive created by the unit, generally just called Removable Disk, with a letter in Parenthesis. Drive letters vary depending on your system configuration.
5. Open the drive by either double left clicking on the drive itself, or by right clicking to open the option menu then left click on the desired drive.



6. Locate the music stored on your computer. Generally this is stored in the "My Music" folder of your computer. NOTE: if you are unable to locate the music on your computer, click on start, search, files and folders, then search for "*.MP3".



7. Once you have located the song files, you can right click on the song itself, and select "copy". Open the removable disk drive, right click on in the empty space, and select Paste. This will transfer the song on to your MP3 player.



8. Repeat step 7 for as many songs as you want to copy on to the unit.

NOTE: MAC Computers

When connected to your MAC computer, the device will act as a removable drive. Simply drag your MP3 files to the device.

Caution

Modifications not approved by the party responsible for compliance could void the user's authority to operate the equipment.

NOTE- This equipment has been tested and found to comply with the limits for Class B Digital device, pursuant to part 15 of the FCC rules. These limits are designed to provide reasonable protection against harmful interference in a residential installation. This equipment generate, uses and can radiate radio frequency energy and, if not installed and used in accordance with the instructions, may cause harmful interference to radio or telephone reception, which can be determined by turning the equipment off and on, the user in encouraged to try to correct the

interference by one or more of the following measures:

- Reorient or relocate the receiving antenna.
- Increase the separation between the equipment and the receiver
- Connect the equipment to an outlet on a circuit different from that to which the receiver is connected.
- Consult the dealer or an experienced radio/TV technician for help.